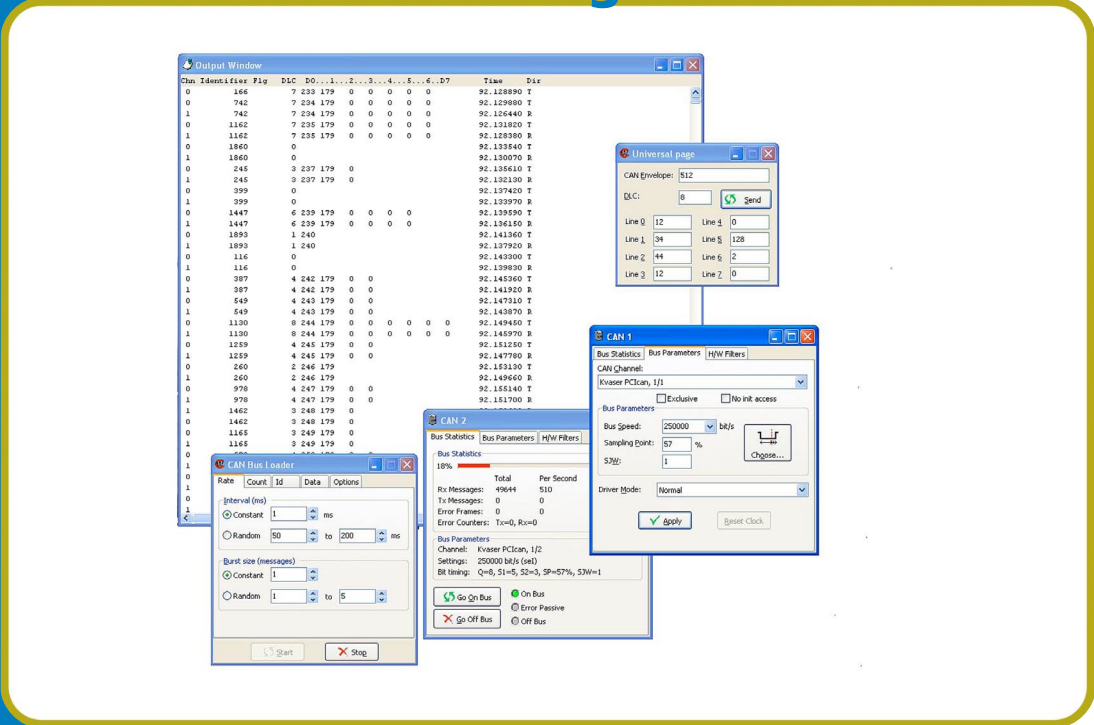


# Kvaser CanKing



## Compatible Kvaser Products

- Kvaser BlackBird Family
- Kvaser LAPcan Family
- Kvaser Leaf Family
- Kvaser Memorator Family
- Kvaser PC104+ Family
- Kvaser PCI104 Family
- Kvaser PC1can Family
- Kvaser PC1canx Family
- Kvaser PCIEcan Family
- Kvaser USBcan Family

## Supported OS

- Windows Vista/Server 2003™
- Windows XP/2000™

## Product Versions

- Kvaser CanKing

## Kvaser CanKing is a free CAN bus monitor and general-purpose diagnostic tool for Windows.

Kvaser CanKing enables you to display raw messages on the CAN bus and optionally format them in several different ways. It is possible to send CAN messages simply by completing a dialog box and pressing “OK”.

## Application Areas

Kvaser CanKing is ideal for interactive development work. It is easy to send CAN messages or error frames in order to study their impact on target modules with any Kvaser CAN interface. Kvaser CanKing is free of charge and supports all Kvaser CAN products.

## General Features

- History list for sent messages
- Time stamping of incoming and outgoing messages (time stamps can be displayed in both absolute and relative format)
- CAN bus statistics (number of messages, bus load etc)
- Select formatters such as pass and stop filters
- Build a parser using the provided DLL formatter
- Create projects or use existing templates
- Traffic generator for studying your system under heavy bus load
- Log to file

## Software and Documentation

- Getting-started and reference documentation are included
- Free download of Kvaser CanKing from [www.kvaser.com](http://www.kvaser.com)
- Supports virtual CAN channels for test or demo purposes (no hardware required)
- Supports all Kvaser CAN products

### **KVASER**

Aminogatan 25

SE 431 53 Mölndal, Sweden

**Telephone:** +46 (0)31 88 63 44

**Fax:** +46 (0)31 88 63 43

**E-mail:** [sales@kvaser.com](mailto:sales@kvaser.com)

**[www.kvaser.com](http://www.kvaser.com)**

© 2008 KVASER AB

*The information herein is subject to change without notice*